

Universal lubricant additive
Applicable in many vehicle parts



Japan Auto Service Promotion Association (JASPA)
Japan Automotive Service Industry Commerce Association (JASCA)
Recommended Product
2017 Long Seller Prize – Daily Automotive News

This product is not a coping therapy with a specific effect, but a product with the concept of returning to a state where the performance of a new car can be demonstrated by causal therapy that solves the cause of the trouble with cleaning, protection, and improvement effects.



All in one

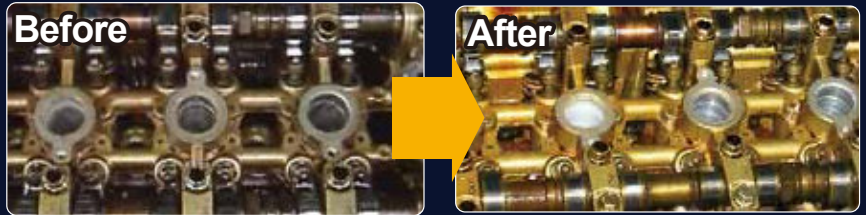
Business package

DIY Package



Feature1
Cleansing

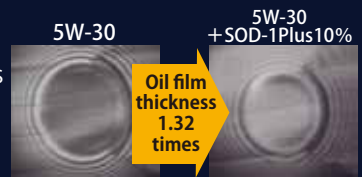
Strong cleaning effect on sludge causing trouble, restoring function of vehicle parts. Safe removal of stubborn sludge/varnishes by cleansing while driving.



Feature2
Protection

The oil film is enhanced by the adsorption film of the main component ester and the state-of-the-art 3D structure synthetic oil, and an extreme pressure agent that supports a wide temperature range from low temperature to high temperature prevents wear and deterioration inside the machine and improves compression.

When SOD-1Plus is added to the commercially available engine oil 5W-30, the oil film thickness increased 1.32 times, and in a bearing life test, the life was extended 4.6 times. These results were published as joint research with Sojo University.



Feature3
Improve
ment

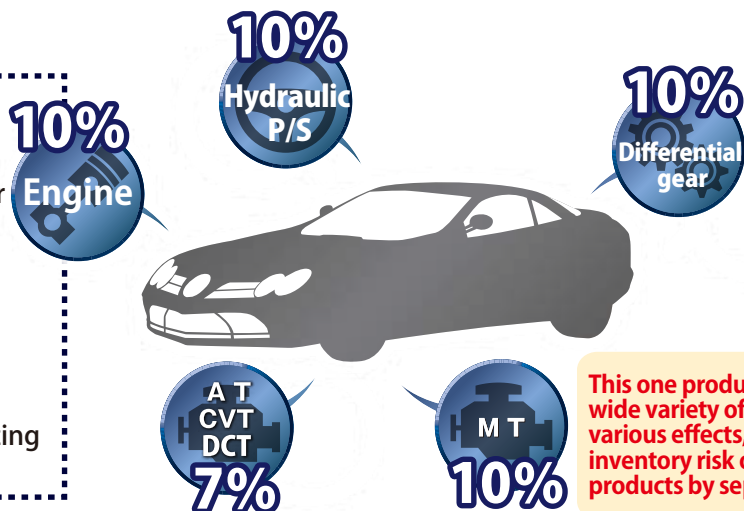
Reduce or eliminate oil leaks by restoring softness to oil seals. Other problems. can be fixed by enhancing vehicle lubrication.

It can be used for 4-wheel and 2-wheel drive, domestic and imported vehicles, agricultural machinery, construction machinery, and small vessels. * Compatible with all SAE viscosity grades of API / ACEA / JASO standard fully synthetic oil, partially synthetic oil and mineral oil.

Vehicle parts suitable
for SOD-1 Plus & amount

In order to maximize the performance of each vehicle part, add high value-added SOD-1Plus to the base oil when oil is changed using the measuring cup.

- 4-cycle gasoline engine
(Rotary, horizontally opposed, hybrid)
* Can be equipped with turbo or supercharger
- Diesel, clean diesel engine
* Also applicable to DPF and urea SCR
- LPG engines
- Cannot use in 2-cycle engines
★ Ideal for vehicles equipped with downsizing turbo and direct injection engine.



This one product can be used in a wide variety of locations and has various effects, reducing the inventory risk of carrying products by separate application.

For more information please visit
our English language website

<http://d1-chemical.com>
<http://sod1plus.com>



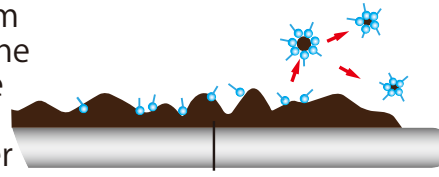
Astonishing results in all parts of a vehicle!



Engine

Addition ratio: 10% of base oil

Sludge and carbon residue that cannot be cleansed from the oil flashings is slowly removed by SOD-1 Plus over the course of 3,000 kms – 5,000 kms driving. In doing so the oil lines are kept clean, and engine parts' function is renewed, returning the vehicle to like new. This is a safer method of cleansing sludge from an engine.



acidic micro particles caused by combustion oxidation

The detergent/dispersant effect of SOD-1 Plus penetrates to the micro-particles of the sludge, wrapping them up within the oil. This prevents clogging of the oil filter.

Effects of SOD-1 Plus

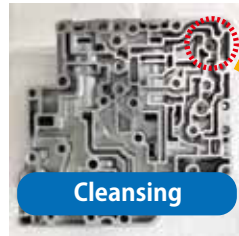
- * Function restored to engine parts by sludge removal
- * Friction reduced, engine protected
- * White/black smoke reduced, oil consumption improvement
- * Odd noise, vibration improvement (VVT, timing chain, tappet noise)
- * Fuel consumption improvement
- * Improved acceleration response
- * Prevention of dry starts



AT/CVT/DCT/DSG

Addition ratio: 7% of base oil

Contamination that can't be removed when the fluid is changed is slowly dispersed during driving. Sludge sticking to precision control valves and surfaces of the clutch disks is removed. Elasticity and softness are restored to the several O-rings, thus preventing oil leaks. Transmission trouble such as gear change shocks and slipping is eliminated after fluid change with SOD-1 Plus added.



Only SOD-1 Plus can cleanse contamination from the clutch control valve. The fluid volume is adjusted by a ball blocking or opening the 2mm diameter aperture of the supply port. Fluid leaks are prevented.

Effects of SOD-1 Plus

- * Cleansing (strainer, clutch disk, valve body, oil cooler)
- * Starting judder, gear change shock, slippage improved
- * Oil/fluid leaks improved or prevented
- * Smoother shift changes
- * Reduction in transmission noise while driving
- * Restores elasticity/softness to O-rings



Hydraulic power-steering systems

Addition ratio: 10% of base oil

High pressure is exerted into the oil lines of the power steering system when the steering wheel is turned. With city driving, the steering wheel is used frequently, leading to higher temperatures in the fluid and faster fluid deterioration. As the fluid deteriorates, friction in the system increases as lubrication worsens, leading to odd noises. Oil seals also deteriorate causing fluid leaks. By adding SOD-1 Plus to the fluid, this deterioration is reduced, frothing within the fluid is reduced, and good lubrication is maintained.

Effects of SOD-1 Plus

- * Function restored to engine parts by sludge removal
- * Friction reduced
- * Improved steering performance
- * Less steering wheel noise (squeaks etc)
- * Eliminate/improve oil leaks from steering pump, hose, rack



MT/Differential gear

Addition ratio: 10% of base oil

Protecting the manual transmission and differential gear is most important. By increasing the thickness of the oil film, SOD-1 Plus protects the gears by boosting the ability of the oil film to resist friction at times of high stress from starting to times of high stress.

Effects of SOD-1 Plus

- * Friction reduced, engine protected
- * Improved differential function
- * Restored function of parts
- * Improvement of chattering in mechanical LSD, better steering performance in front diffs.
- * Improved shift, gear (synchro) performance
- * Reduction of odd noises
- * Prevents oil leaks by restoring rubber seals